

In-MotionsGO Users Guide

1. In-Motions Go Package



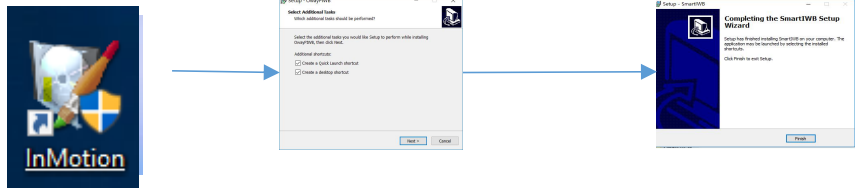
Signal receiver USD cable & IR pen CD components

2. Hardware Installation



Hardware installation
Notice: Please reference the suggested distance table below.
It is recommended that the signal receiver be placed on the projector.

3. Software Installation

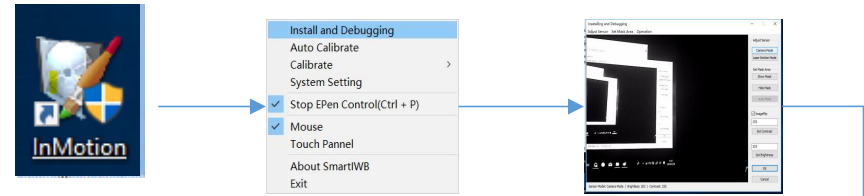


Software Installation Installation prompt box Installation Completed

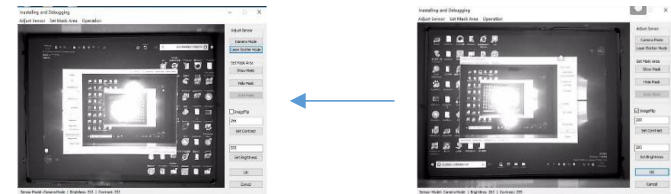
4. Software Debugging



Open the software The taskbar does not show open software Open the hidden icons" to find it



Open the installed software Enter the debugging interface Choose "Camera Made"



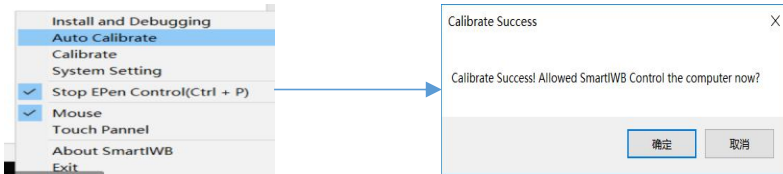
Straighten signal receiver If the image is inverted state choose the "ImageFip" option.

Notice: Straighten signal receive, centering the projector area at the center of the signal receiver's signal range.

5. Software Calibration

Notice: In-Motions Go supports automatic choose one of the modes.

1..Auto-Calibration



Open the software menu in the taskbar

Calibration completed Box

After auto-calibration is completed, click "OK"

Recommend use manual calibration when the light is strong

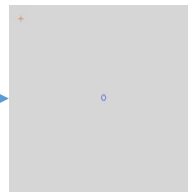
2.Manual calibration



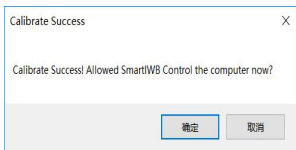
Open the pen cap and put the battery



Choose manual Calibration



Calibration interfere



Calibration completed Box



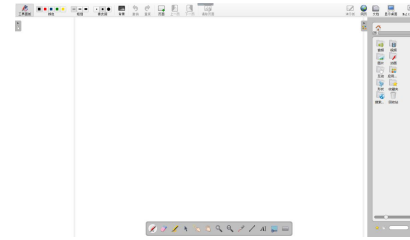
After calibration icon



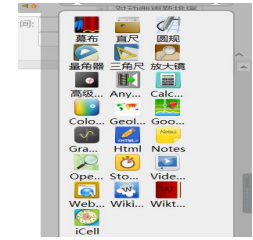
Unpositioned icon

Notice:After automatic or manual calibration,you can use In-Motions GO right now.

6.Multiboard Use



MultiBoard main page



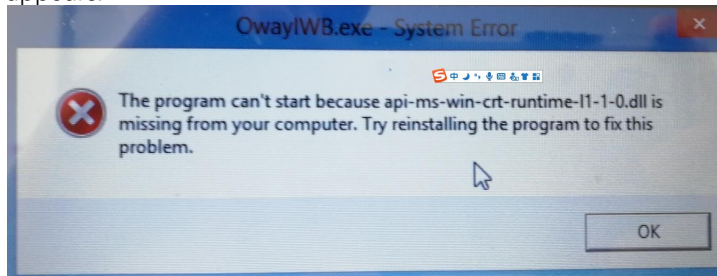
MultiBoard application

Size (inch 4:3)	Long Throw (cm)	Middle Throw (cm)	Short Throw (cm)
70	230-300	150-210	45-73
80	260-350	170-240	50-85
100	330-430	210-300	65-110
120	390-520	250-360	74-130
150	490-650	315-450	95-165

7.FAQ & Attention

- 1.The software installation process may be blocked by anti-virus software,recommend to close the anti-virus software before installing.
- 2.When the software debugging, signal receiver the signal receiving area needs to fully cover the writing area.
- 3.After completed the calibration, please don't move the signal receiver.
- 4.If the computer mouse isn't controlled,press the keyboard "Ctrl + p" to turn it off and anew calibration.
- 5.When using manual Calibration, using the IR pen point at the center of the coordinate circle.
- 6.When you use product, you need to add the software to the trust zone of the protection software.
- 7.When opened the software,the software is now open in the taskbar. If you didn't see the software icon in the lower right corner, click Hide Programs to display the software icon.

7.If Visual C++2015 Redistributable is missing, the following prompt appears:



Solution: Install Visual C++2015 Redistributable

Installation steps:

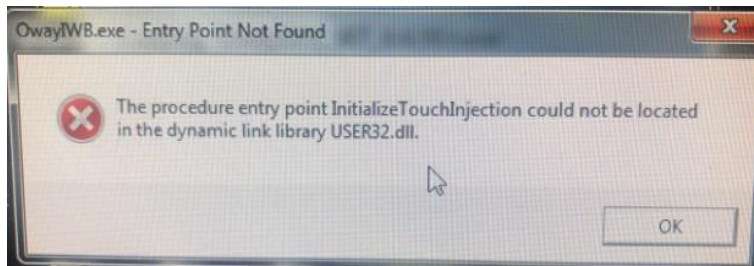
1. Install from the CD directory: package\vc2015_redist.x86.exe

2. Or download from

[https://download.microsoft.com/download/9/3/F/93FCF1E7-E6A4-478B-96E7-](https://download.microsoft.com/download/9/3/F/93FCF1E7-E6A4-478B-96E7-478B-96E7-478B-96E7-478B-96E7-D4B285925B00/vc_redist.x86.exe)

[D4B285925B00/vc_redist.x86.exe](https://download.microsoft.com/download/9/3/F/93FCF1E7-E6A4-478B-96E7-478B-96E7-478B-96E7-478B-96E7-D4B285925B00/vc_redist.x86.exe)

8.If the system installed error software (for example: WIN8 WIN10 software installed in WIN7 system), the following prompt will appear:



Please install the correct version!