

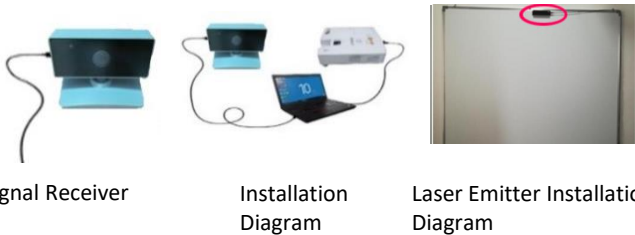
In Motion Guide

In Motion Interactive Kit Package

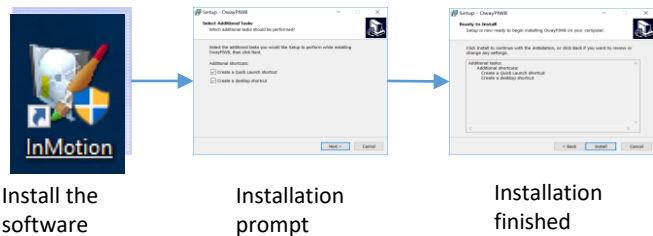


II. Hardware Installation

Take use of the USB cable square port to connect with the signal receiver. And another USB port to connect with the host. The laser emitter should be mounted centrally above the writing area.

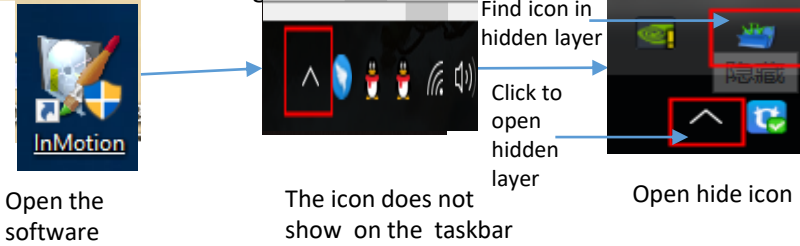


III. Software Installation

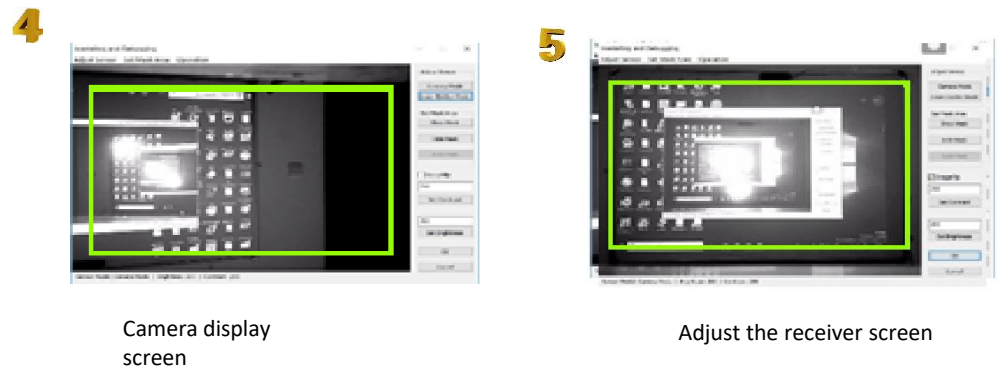
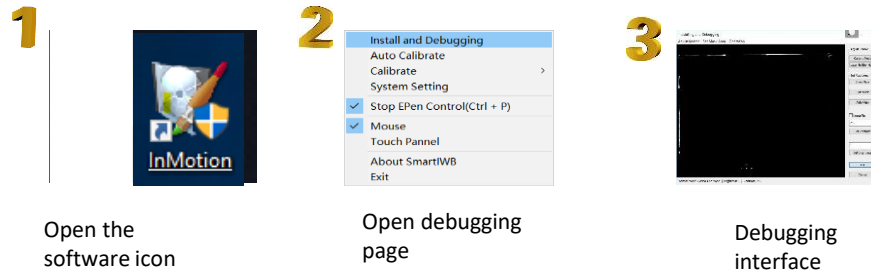


IV. Software Correction

Note: After opening the software, you can't see the software icon in the taskbar, click the hide icon, find the software icon in the hidden icon, continue the following operations.



Note: After opening the debugging interface, click "Camera Mode" (right side of the interface). Adjust the signal receiver so that the writing area is completely within the yellow area of the view screen.

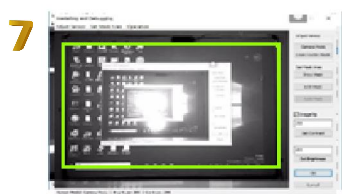


Note: If the screen is reversed, perform steps 6 and 7. If there is no reverse, skip steps 6 and 7

5.1.Laser Emitter Debugging Procedures



Reverse picture



Tick "ImageFip" (left) option box to adjust the screen



The white area in the picture is the writing area

V. Laser Emitter Adjustment

The laser transmitter contains 3m glue on the bottom, which can be directly stuck on the whiteboard.

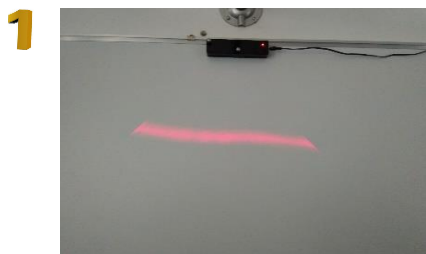
After the laser emitter is installed and powered on, use the remote control to turn it on, or press the button on the laser emitter to turn it on. When it is turned on, the indicator light is red.



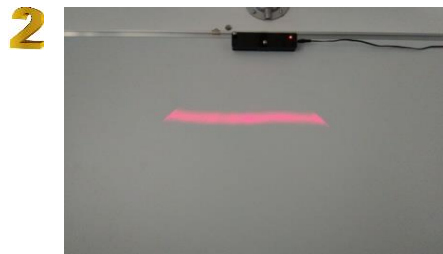
Diagram of the position of the laser emitter

1. When adjusting the laser emitter, make sure that the actual writing area is on the approximate position of the display screen for adjustment.

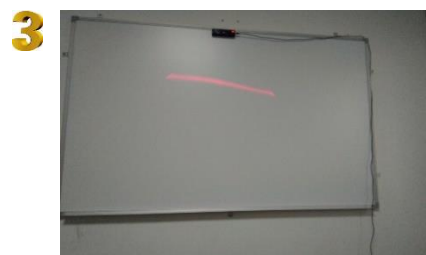
2.The laser emitter needs to be turned on with the remote control, and the indicator light is red after turning on. Or directly press the button on the laser emitter.



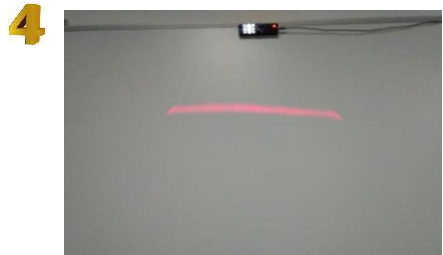
Default state of laser emitter (initial state)



Turn the laser from the initial state to the horizontal state



If the laser tilt occurs during the downward diffusion adjustment, the laser needs to be adjusted to the horizontal state and then continue to diffuse downward.



After adjusting to the horizontal state, then continue to make it spread downward.



Make the laser spread down to 10 cm below the bottom of the writing area. The laser is straight from start to finish.

Note:

1. The laser emitter needs to be turned on with the remote control (or directly press the button on the laser emitter), the indicator light is red when it is turned on.
2. Make sure the laser to be a straight line during adjustment.

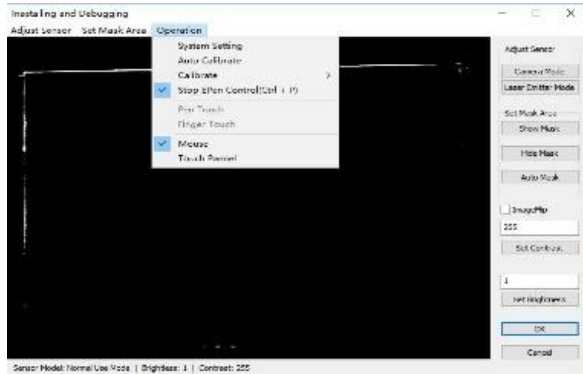
Laser Emitter Tuning Button

1. Fine-tuning button in the upper left corner: a button for adjusting the left and right direction of the laser, ie, adjusting the laser to the horizontal state.
2. Middle fine-tuning button: Adjusts the effect of laser downward diffusion.

VI. Automatic Calibration

After finished the laser emitter adjustment, the software will be calibrated automatically. After the calibration is successful, the product can be used directly.

When the calibration is successful, the screen will directly return to the desktop, close the adjustment window, and then you can use the product directly.



Automatic calibration option is among the "Operation" options, click "Auto Calibrate" for automatic calibration. Do not move the signal receiver or block signals, etc. during calibration. This product can be used directly after calibration.

6.1. Automatic Calibration Procedures

1



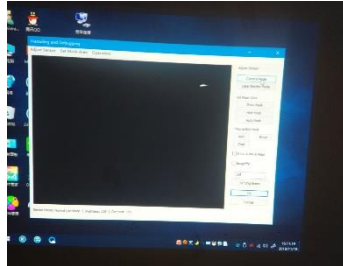
Open "In-Motion" software

2



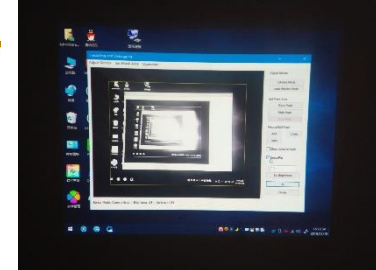
Choose "Installation and Calibration", enter into the debugging interface

3



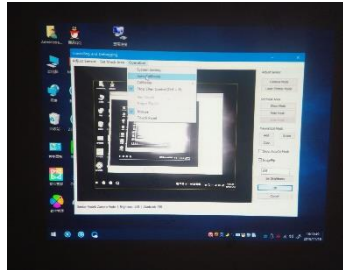
Choose "Camera Mode"

4



Click "ImageFilp", adjust well the receiver screen.

5



Select "Operation" and click "Auto Calibrate" to enter automatic calibration. You can use this product directly after successful calibration.