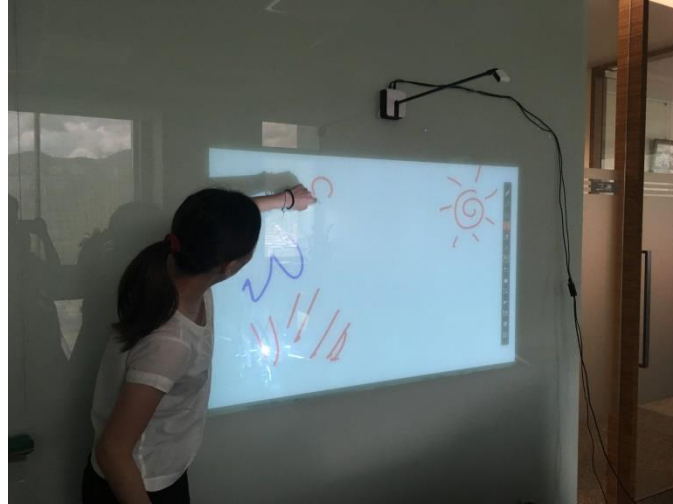


Temporary Installation Manual

This manual is for mounting InterPro temporarily, suitable for demo InterPro to the customer or using InterPro on the glass whiteboard.



THE TOOLS YOU NEED

Accessory



How to use

- There are some 3M adhesive tapes included in the package for temporarily mounting.
- Stick 3M tapes on the back of InterPro for temporarily fixing it on the wall.
- Easy to remove and demo to your customer.



- You may also need some scotch tapes or cable clips to organize the USB/power cables on the wall temporarily.



STEP 1. STICK INTERPRO ON THE WALL

- Sticking the red 3M tapes on the back of InterPro



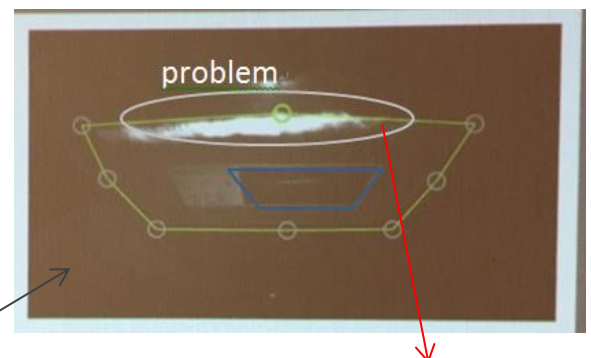
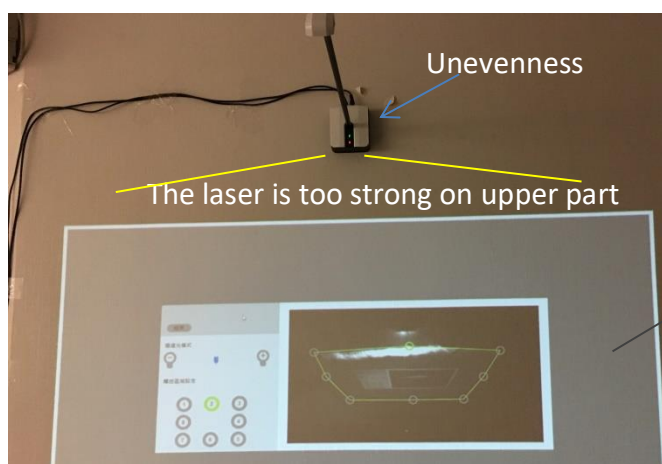
- The 3M tapes will cause a gap between InterPro and the wall, which will make InterPro not attach on the wall flat and cause laser reflect improperly.



Gap:
Result in the unevenness of
laser curtain

STEP 2. CHECK THE FLATNESS OF LASER BEAMS

- Please select “Touch Area Setting” first. The image from IR camera can assist you to solve the problem: if the laser box is not flat to the wall, you may see the image below.

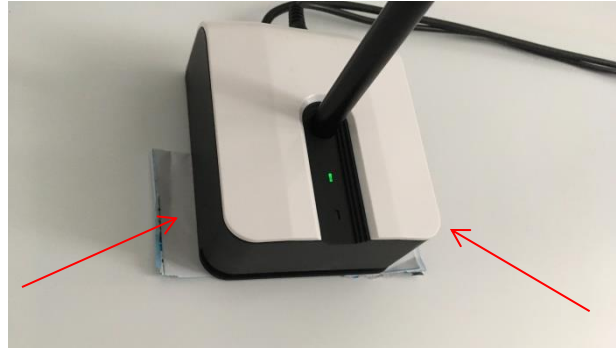
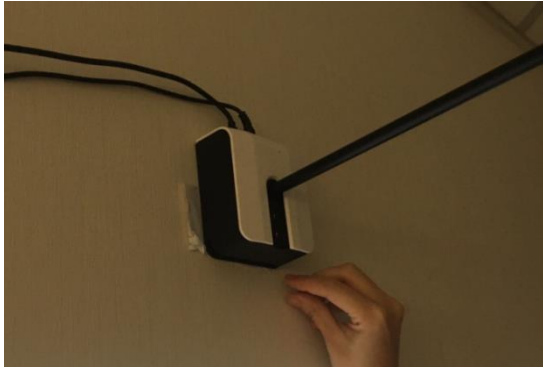


*The laser should scatters in the blue frame (real touch area) evenly.

*In this case, the image indicates that the laser box is not flat, and the laser is too strong on the upper part.

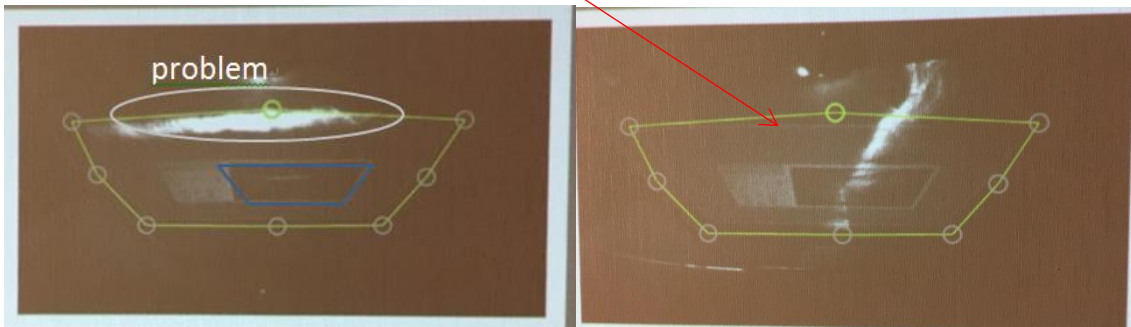
STEP 3. MAKE LASER BOX FLAT TO THE WALL

To solve the problem, please add the paper sheets from the bottom of InterPro to keep InterPro as flat to the wall as possible.

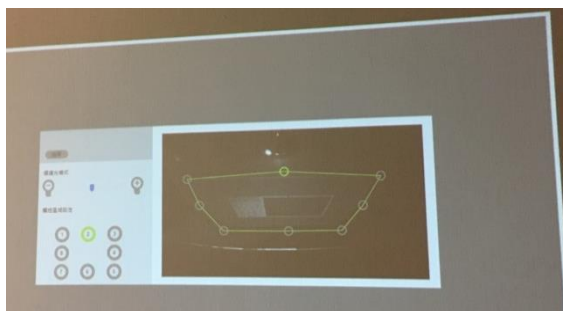


* Add the paper from the bottom of InterPro. Suggest folding the piece of paper in half about 3-4 times.

- After adding the paper from the left side of InterPro, you can see the problem on the left side is solved. Please adjust the position of papers until all the unusual light is eliminated.



- In this case, the problem was solved after the papers were added from both sides of InterPro



-ENJOY YOUR TOUCH-