

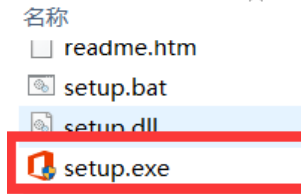
PPT Plug-in Quick User Manual

I. Programme Environment Setup

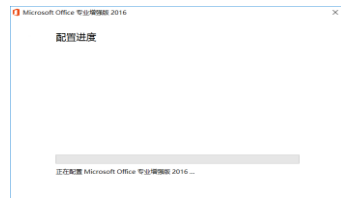
1.1. Before installing and using the plug-in, you need to prepare the installation environment in advance. Make sure the pieces can be installed and used smoothly.

1.2. Before installing the plug-in, you need to install powerpoint first and write down the version number. If you have already installed PowerPoint, please skip this step and go directly to "2. Whiteboard Calibration Software Installation"

Calibration Software Installation"

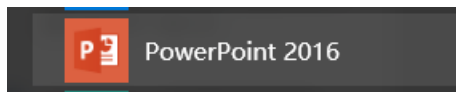


Office installation programme



Installation progress bar

Check the version of powerpoint after the powerpoint is installed. The last number of Powerpoint is considered the version number.



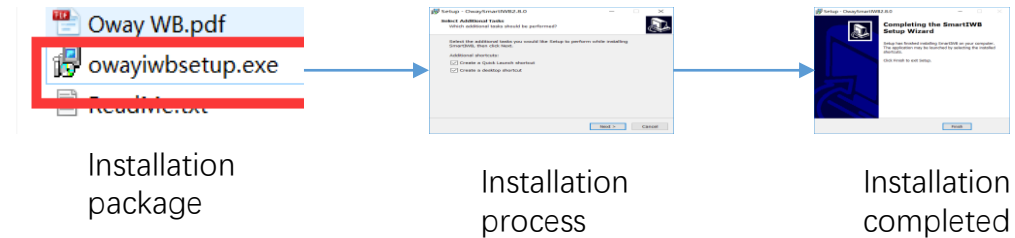
powerpoint

Note: If installed for office365 is considered PowerPoint2016

2. Whiteboard calibration software installation

2.1. Antivirus software needs to be shut down before installing the software. If you have already installed the whiteboard calibration software, please go directly to the "2. Plugin installation" step.

2.2 There is white board calibration software in the corresponding CDS of the product for Software installation.



II. Plug-in Installation

1.1. When installing the plug-in, you need to close the anti-virus software and network it. The network should be connected during the installation.

1.2. Powerpoint and whiteboard calibration software are not working during the plug-in installation process.
(The software is not running).

III. Plug-in introduction and Usage

1.3. Open the CD "PowerPoint plug-in" folder

MultiBoard	2019/3/28 15:02	文件夹
MultiDriver	2019/3/28 15:03	文件夹
Packages	2019/3/28 15:03	文件夹
PowerPointAddin	2019/3/28 15:04	文件夹
Oway WB.pdf	2019/1/15 15:25	看图片 PDF 文件
owayiwsetup.exe	2018/12/13 15:41	应用程序
ReadMe.txt	2018/12/13 15:55	文本文档

Powerpoint plug-in folder

1.4. Select the 2016 version plug-in in the folder (if office edition is 2007, 2010, 2013, to install the "for office2007 to 2013" plug in in this folder)

forOffice2007to2013	2019/3/28 15:04
forOffice2016	2019/3/28 15:04
Packages	2019/3/28 15:04

Plug-in edition

1.5. After opening the folder, click "setup.exe" to install

名称	修改日期	类型	大小
Application Files	2019/3/28 15:04	文件夹	
PPT2003ToolAddin.vsto	2018/6/25 16:44	VSTO Deployme...	6 KB
setup.exe	2018/6/25 16:44	应用程序	533 KB

Install setup.exe

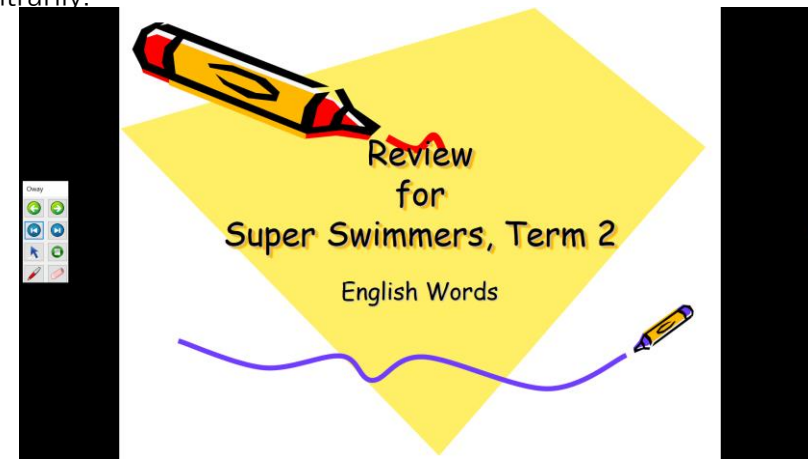
1.6. Choose "accept" to install the plug-in in the installation prompt box. Please wait patiently for the installation to complete.

1.Plug-in operation procedures

- 1.1. Before using the plug-in, you need to open the whiteboard calibration software and do the calibration (if the calibration is completed before, there is no need to re-calibrate it).
- 1.2. After opening the calibration software, open the powerpoint software, (open the slides you need to use) and click on the content you want to display.
- 1.3. The plug-in will be automatically displayed when the content is shown. It can be used directly with an interactive pen.

2.Plug-in display

2.1 This plugin has the following functions: previous page, next page, first page, last page, pencil, mouse mode, one-click end, eraser, etc., and can drag the panel arbitrarily.



插件演示